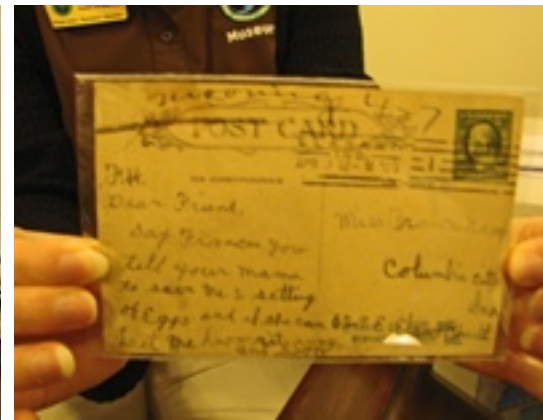




# Elkhart County Historical Museum



[Don't Miss all the other Photos on Flickr - Click here to View](#)

## Museum: History of Postcard Collection

Michelle Nash, Curator of Collections of the Elkhart Co. Historical Museum, presented the event. Their earliest postcard is from 1903. The period 1901 to 1907 was the era of government printed postcards that mailed for 1 cent. Other postcards mailed for 2 cents. 1907-1915 was the Golden Age of postcards with a split back to allow both message/ mailing address leaving the front to be used for a photo. This form of communication is similar to how we text today. The most historically important cards in their collection are with messages telling of life in those days, using any photo postcard to communicate everyday needs - like ordering some eggs. There was a Kodak postcard camera at that time - expensive but useful for taking and processing personal photos as post cards. When Germany-printed postcards were banned during WW1, USA printed postcards were of lower quality for a while. Postcards with white borders are mostly from after WW1 to the 1930s. The museum has few examples from 1930 to to 1945. Nash will have some of the postcards on display for a few more days for those who missed the event. Visitors can search for other postcards on the museum library computer. **Someone who likes and collects postcards is called a Deltiologist.**

### Just the Facts:

The Elkhart County Historical Museum is located in the Rush Memorial Center, 304 W.Vistula St., Bristol Indiana

For tours and info:

574-848-4322

Open all year

Hours:

Tues.-Sat. 9am-5pm

Closed Sunday except for special programs.

[Visit the Museum Website](#)